



06 Pilsen – Rychtářka
Pilsen Region





Pilsen

Pilsen Region

86 003

Unique visitors / month

213 220

The number of visits / month

Location: Rychtářka
Address: Tyršova 4, Pilsen 3
Placement: Outdoor on the building shell
Dimensions: 23 m² – 512 × 448 cm (2×)
Ratio: 16:9 – 1280 × 720 px
Operation time: 6:00 a.m. – 10:00 p.m. (16 hours)



Birth certificate



Statistics



Screen's potential:

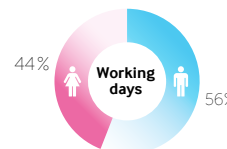
11 400 🚶 Pedestrians (people a day)

64 600 🚗 Motorists (people a day)

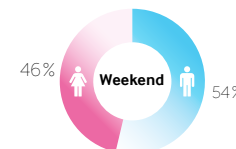
76 000 🕒 **Daily Traffic Count**

Locations: business district / residential area

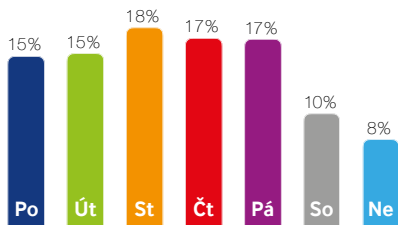
Positions: downtown



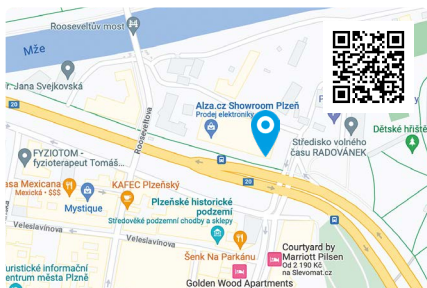
👩 **Female** 94 452
 👨 **Male** 118 768



👩 **Female** 98 681
 👨 **Male** 114 539



Weekly viewership 6:00 a.m. – 10:00 p.m.



GPS coordinates: 49.7500153 N, 13.3806414 E

Description of Location:

The location of the screen on the Rychtářka parking house is very lucrative in the context of the all-day high traffic in direct relation to the surrounding sports grounds, pedestrian zones, Náměstí Republiky, etc. The fundamental advantage of the screen is its division into two parts, which ensures the visibility of the advertisement from all possible angles.

Coverage:

Roadway: street / pedestrian zone / intersection / parking lot

Surroundings: Public transport / post office / PNS / cultural facilities / sports facilities / shops / school primary school, secondary school / bank / restaurant / hotel / court

Visibility: over 200 m

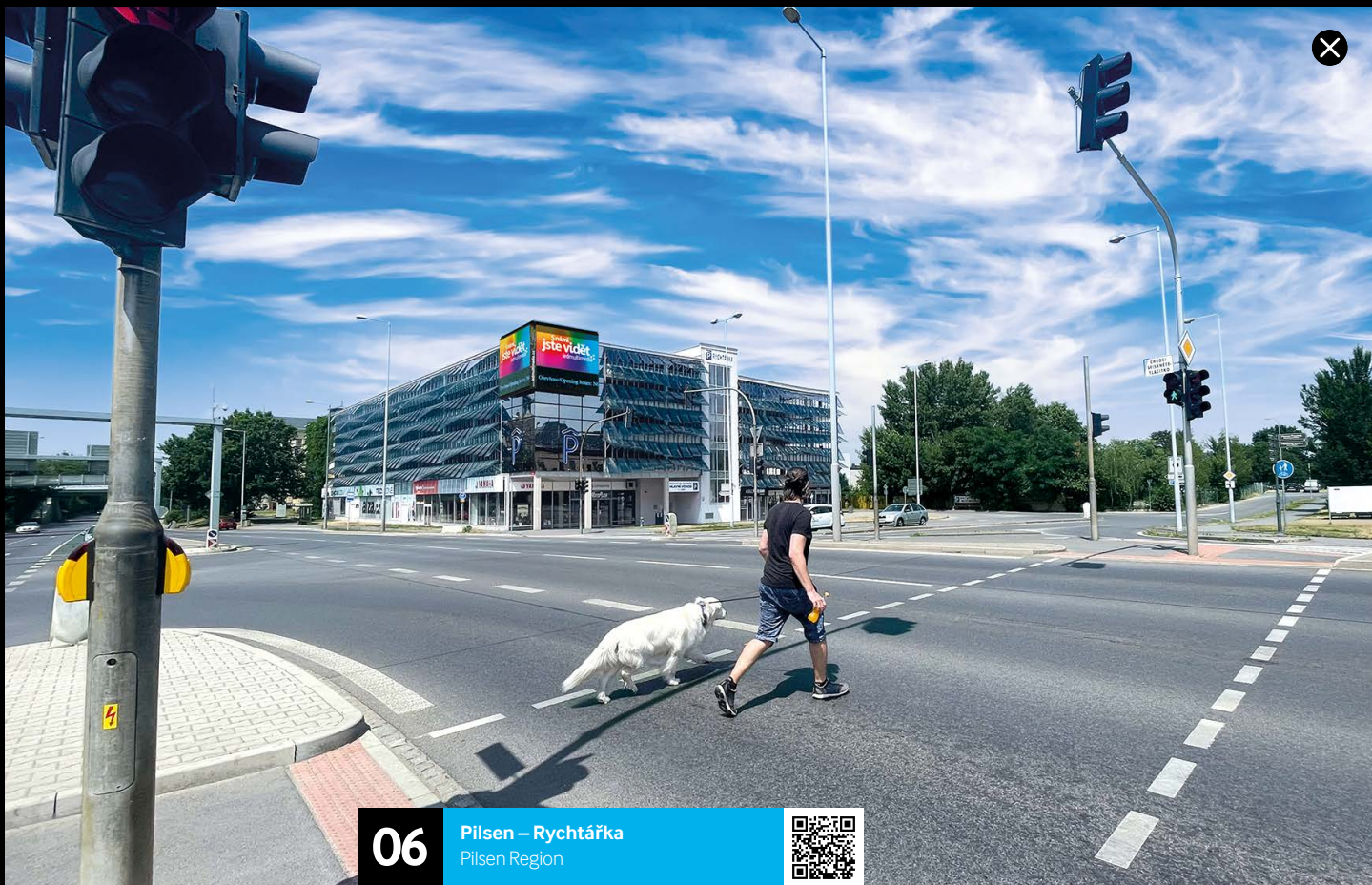




06

Pilsen – Rychtářka
Pilsen Region





06

Pilsen – Rychtářka
Pilsen Region



Contacts and support

ledmultimedia 

Our contacts:

Ledmultimedia, s.r.o.
Klokotská 744/29
390 01 Tábor

IČ: 28118642
DIČ: CZ28118642

Bank connection:

CZK – 1387913078/2700
EUR – 1387913086/2700

GSM: +420 727 874 408
E-mail: info@ledmultimedia.cz



Terms and Conditions



Catalogue LED
2023



How to prepare data



Technical support



info@ledmultimedia.cz / www.ledmultimedia.cz 